

ARTEMUS W. HAM CONCERT HALL FACT SHEET

GENERAL

The Artemus W. Ham Concert Hall is located on the campus of the University of Nevada, Las Vegas. The 1,832 seat facility was constructed in 1976.

AUDITORIUM

The auditorium features continental seating throughout the main floor and balcony. The capacity of the main floor permanent seats is 1,349 and the balcony capacity is 483 for a total permanent capacity of 1,832.

LOBBY

The main lobby is 40' x 145' and contains lounge seating for 77 people. Within the lobby area are public restrooms and a concession serving area. Merchandise sales require tables.

PERFORMER'S WING

The performer's wing, adjacent to stage right, houses the performer's lounge (green room) and the dressing rooms, as well as production offices. The green room is 40' x 50' and contains 2 tables, a drinking fountain and lounge seating for 40 people. There is also an audio and video stage monitoring system.

DRESSING ROOMS

The men's and women's dressing rooms contain makeup stations for 10 persons each as well as sinks, toilets and showers. The two

private (solo) dressing rooms each contain two makeup stations, a day bed, sink, toilet, and shower. Three of these rooms are A.D.A. accessible, including the "star" dressing room.

RIGGING SYSTEM

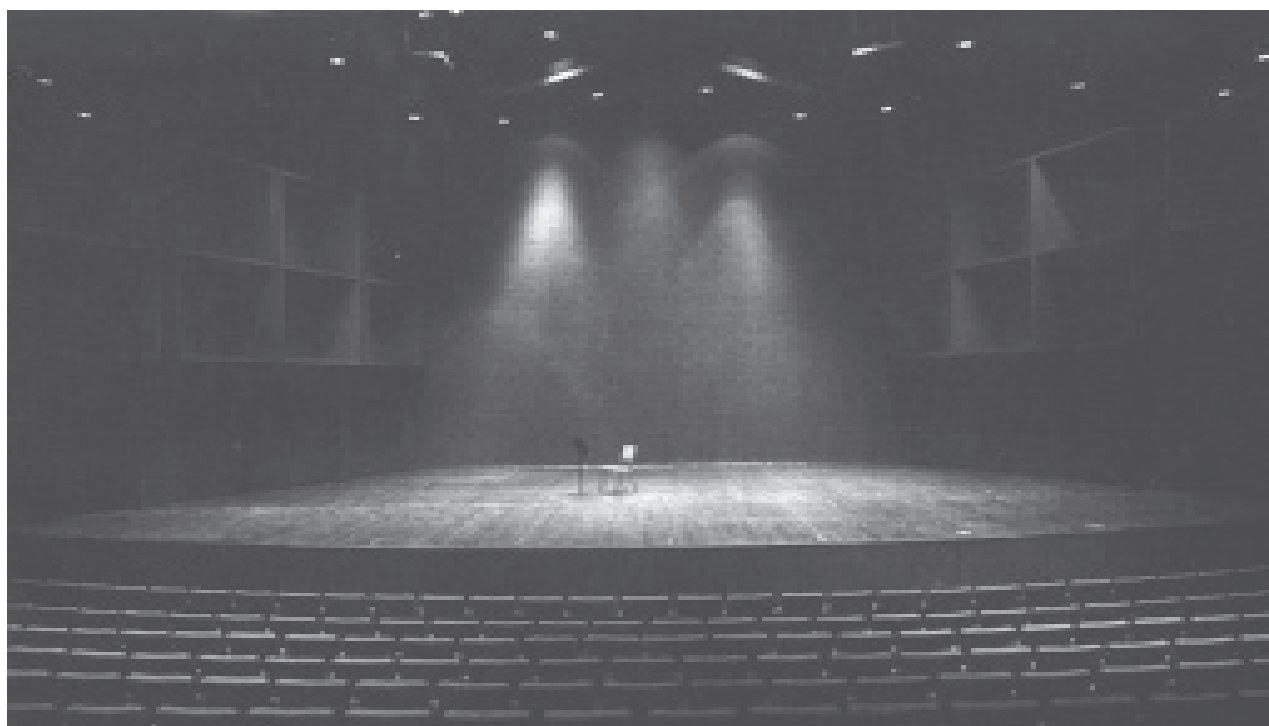
The facility does not contain a rigging system. There is no gridiron and the unusual configuration of the lighting catwalks and sound clouds virtually precludes even the temporary hanging of pipes or rigging.

SHOP FACILITIES

The Concert Hall does **not** contain any scene or costume shop. The facility does have a basic washer/dryer unit.

ORCHESTRA TOWERS

The most prominent features of the Concert Hall stage are the permanent orchestra towers. These towers, four on each side of the stage, **ARE FIXED, STATIONARY, AND IMMOBILE**. All access to the stage from the wings is through doors in the lower section in each tower. Doors in the two upper sections of each tower can be opened to permit stage lighting. The entrance doors on the downstage towers on each side are 5'-11" wide and the remaining towers have doors 5'-1" wide. All entrance doors are 7'-9" high but contain an obstruction in the form of a knee brace on each side of the opening at the top (see photo). The towers



Performing Arts Center

UNIVERSITY OF NEVADA LAS VEGAS

consist of a metal square-tube frame covered with particleboard and are painted “blackberry.” They are 20’-0” high.

In their normal position the towers continue the line of the acoustical panels in the auditorium and form a forced perspective sound shell on the stage (see floor plan). The towers may be rolled off stage to provide more stage space with a subsequent loss of wing space. The distance of travel of each tower measured from the centerline of the stage to the onstage edge is listed below:

Tower	Minimum	Maximum
#1(DS)	25’-0”	48’-0”
#2	21’-0”	48’-0”
#3	18’-0”	48’-0”
#4(US)	15’-0”	48’-0”

With the #4 towers in the full offstage position and the others in the normal position, it is possible to move tall scenic units onto the stage. The stage towers are unwieldy and should be preset by the house staff in advance of company arrival. **Tower moves are labor intensive.**

PERFORMANCE BALCONIES (Vestibules)

Located 16’-7” above the stage floor and adjacent to D.S.L. and D.S.R. are two triangular spaces originally designed to house organ pipes. These areas may be used for a small orchestra or choir in lieu of the pit, or for special effects with brass choirs, etc. The approximate dimensions are 36’-0” with a usable area of 470 square feet per balcony. Sightlines for a conductor in these areas may need to be augmented with closed-circuit video equipment.

LOADING

The loading dock, adjacent to stage left, can accommodate up to three vehicles at one time. The dock height is 4’-3”. Loading is through an 11’-0” wide overhead door and then a 90 degree turn onto the stage.

CROSSOVER

There is no backstage crossover. Crossing from one side of the stage to the other is accomplished by going through the basement

area. The Crossover route is marked and lighted. True rear stage crossovers can only be created by rented trussing and draperies.

REGULATIONS

Smoking is not permitted in the facility auditorium per Nevada State regulations. The customary curtain times are 2:00 p.m. and 8:00 p.m. Pyrotechnics must be operated and approved by a licensed State of Nevada pyrotechnist.

STAGE MANAGER

The stage manager’s control panel is located D.S.R. It contains a video monitor, an intercom headset position, dressing room paging, lift controls, house light controls, a ten-channel dimmer board, a four-channel audio mixer/amplifier and panic buttons. Small house consoles can also be operated for this location for smaller events.

STAGE LIGHTING SYSTEM

Orchestra Lights: To provide general illumination for orchestral and recital events, the stage is equipped with a permanent downlight system. The system provides an average of 100 foot candles of illumination over the entire stage and is controlled by a dimmer operated from either the light booth or the stage manager’s panel and console.

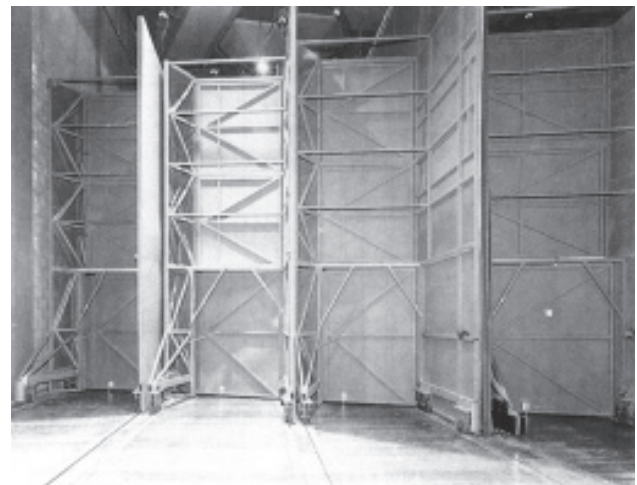
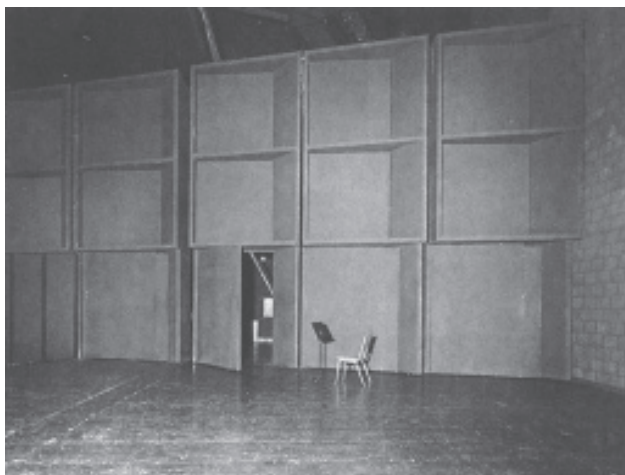
Dimmers: The dimmer system was manufactured by ETC, Inc. and consists of 120 sensor dimmers @ 2.4 KW (#P-73) and 4 @ 6KW (#R-71). Lighting load circuits are hard-wired to the dimmers and patching is by electronic means of a DMX System which assigns the dimmers to the low-voltage control-channels.

DMX512: Connections are located offstage right and in the lighting booth.

Control Board: The computer board is an ETC Expression 3 console with 800 channels.

Instrument Inventory:

#	Type & Size	Lamp/Watts
24	ETC Source 4 19deg	HPL750W



Performing Arts Center

UNIVERSITY OF NEVADA LAS VEGAS

3rd Catwalk

18	ETC Source 4 26deg	HPL750W	
6	ETC Source 4 19deg	HPL750W	
24	20 Deg. (6x12) Berkey Colortran Lekos	575	HX

2nd Catwalk

18	ETC PAR64 Wide Floods	HPL750W	
6	ETC PARnels	HPL750W	
2	ETC Source 4 26deg	HPL750W	

Bridge to 1st Catwalk

9	ETC PAR64 Wide Floods	HPL750W	
23	ETC PARnels	HPL750W	
2	ETC Source 4 26deg	HPL750W	

1st Catwalk

31	ETC PAR64 Wide Floods	HPL750W	
23	ETC PARnels	HPL750W	
4	Four Cell Far Cycs	FFT1000W	

SL & SR Vestibules

2 ea.	ETC Source 4 10deg	HPL750W	
-------	--------------------	---------	--

SL and SR Towers 1 and 2 (downstage)

8	ETC Source 4 19deg	HPL750W	
8	ETC Source 4 26deg	HPL750W	

SL and SR Tower 3

8	ETC Source 4 19deg	HPL750W	
8	ETC Source 4 50deg	HPL750W	

SL and SR Tower 4

16	ETC Source 4 19deg	HPL750W	
----	--------------------	---------	--

Rep Plot

3	Color Front Washes
3	Color Down Washes
4	Color Side Washes
4	Color Cyc Wash

COMPANY SWITCH

The company switch is located D.S.L. a Available power is 3-phase, 4-wire, 600 amps/phase, 120/208v, 60 Hz. Connection is with camlocks. Cold water pipe is available for grounding.

FOLLOW SPOTLIGHTS

The building is equipped with two Lycian 1290 XLT xenon followspots which are located in booths at the rear of the balcony. The throw is 120' to the front edge of the stage.

DRAPES

The facility's drape inventory is limited to the three items listed below. There are no legs, borders, or panels.

Grand Drape: Located 23'-9" from the upstage wall. With the grand drape closed and the orchestra lift at stage level, the forestage area is 16'-6" deep at the centerline. With the orchestra lift in the lowered pit position, the apron area in front of the grand drape is 1' deep. The grand drape is "lipstick" red velour and is 28'-0" high. It travels offstage through a slot between orchestra towers #1 and #2. It is motorized and operates at an even and moderate pace.

Rear Traveller: Located 3" from the upstage wall. The rear traveller is black velour and is 30'-0" high. It travels offstage through a slot between orchestra tower #4 and the upstage wall. It is **not** motorized and operates slowly.

Cyclorama: The flat cyclorama is made of bleached muslin and can be located between the rear traveller and the upstage wall. It is 27'-6" high x 44'-0" wide and ties to a hand winch-operated pipe.

COMMUNICATION SYSTEMS

There are three separate audio and one video communication system in the facility.

Audio Monitor System: originates sound from the stage and distributes it to the dressing rooms, green room, light booth and sound booth.

Paging System: allows the stage manager to page the dressing rooms, green room and control booths.

Headset Cue System: provides party-line communication between stage manager, light booth, sound booth, spot booth and orchestra pit. There are additional positions located D.S.L., U.S.C., on the performance balconies and under auditorium seat J-26. A Telex headset system is installed.

House Intercom: provides party line communication with signaling between stage manager, house manager (lobby), rear of main floor and rear of balcony.

SOUND CONTROL SYSTEM

Control Board: The sound control board is located in the sound booth at the rear of the balcony. The area is not glassed and is open to the auditorium. The control board is a Mackie CR1604 16 Channel Mixing Console and a Midas Venice 160 with 16 channels, 4 subchannels, 2 auxilliary channels and 2 monitor outputs.

Tape Recorders: The sound booth houses three tape recorders: Ampex AG440C, 1/2 track stereo, 7 1/2 and 15 ips; TEAC A-334OS, 1/4 track quad, 33-3/4 and 7 1/2 ips; and TASCAM 112 MKII Cassette.

CD Deck: DENON CD-401

Amplifiers: In addition to the two Altec 1590C which drive the main speaker cluster, there are two 100 watt Altec 1594B and five watt Altec 1590B amplifiers available.

MICROPHONES

All microphone and line-level connections are made with 3-pin XLR professional audio connectors. There are a limited number of adapters available.

Our microphone inventory includes: 6 Beta SM 58As, 5 Beta SM 57As, 1 Radio Shack Unidirectional Switch mic, 2 Unisphere 58-85Bs, 2 Unisphere 56-55Ds, 1 Shure SM58, 4 AKG 451 DBs, 5 Audio Technical 18853 RX Phantom Power Chorus Midcs, 5 Crown PCC 160s, 6 AKG Shotgun Mics, 4 Electrovoice, RE16s, 2 Electrovoice RE55s, 1 Unitine 3 SR57.

Performing Arts Center

UNIVERSITY OF NEVADA LAS VEGAS

SPEAKERS

Main Cluster: The main speaker cluster is located at the catwalk level above the down center edge of the stage. The cluster consists of 6 JBL Super-tweeters, 2 Altec 1003 B high frequency horns, 4 Altec 803B high frequency horns and 4 Altec 515-B low frequency loudspeakers. Reproduction is monaural.

Stage Monitor: There are 2 Clair Bros. R4III stage sidefills and 4 stage monitor wedges (Clair Bros 12AM).

For further information:

Technical Director

UNLV Performing Arts Center
University of Nevada, Las Vegas

4505 Maryland Parkway

Box 455005

Las Vegas, Nevada 89154-5005

(702) 895-3804

Below are listed the pertinent telephone numbers for the Concert Hall. For personal calls to company members, please use the Backstage number.

Programming/Production	(702) 895-4712
Finance/Guest Relations	895-4711
Backstage	895-3803
Box Office	895-ARTS(2787)
Production/Crew Office	895-1652
Fax	895-4714

