

*2009 – 2010 Season*

*Performing Arts* Center  
UNIVERSITY OF NEVADA LAS VEGAS



## GET REACQUAINTED WITH THE UNLV PERFORMING ARTS CENTER AND THE COLLEGE OF FINE ARTS FOR THE 2009-2010 SEASON.

During this time of economic turmoil, the arts haven't been immune. Across the nation, arts organizations are closing their doors and cancelling/postponing performances. In Las Vegas, the arts community is, perhaps, subject to more severe damage from a flagging economy, because organizations here typically rely heavily on ticket sales to meet expenses.

Even in this uncertain time, the Performing Arts Center and the College of Fine Arts at the University of Nevada, Las Vegas are here and we plan to stay. The Charles Vanda Master Series, the longest running classical music series in the city's history, will continue. We will remain the major off-strip presenter of cultural offerings in Southern Nevada.

For nearly thirty-five years, UNLV and the Performing Arts Center have served as the home for the arts in Las Vegas:

- We've helped organizations like the Nevada Ballet Theatre and the Las Vegas Philharmonic grow and prosper.
- Other organizations, like the Desert Chorale, the Las Vegas Master Singers, and the Southern Nevada Musical Arts Society, have longstanding traditions here.
- We bring world-class artists to our place in the desert with the Performing Arts Center's three series – Charles Vanda Master Series, New York Stage & Beyond Series, and UNLV Classical Guitar Series.
- With productions by the College of Fine Arts, including productions presented by the Nevada Conservatory Theatre and the dance and music departments, Southern Nevadans can enjoy the arts nearly every day of the year.
- We continue to be good community citizens:
  - hosting more than 50,000 Clark County School District students yearly for productions, concerts, and festivals;
  - donating over \$100,000 in production costs to the CCSD Fine Arts division to give students a quality performance experience at limited expense;
  - and, granting fellow not-for-profit organizations major discounts on facility rental fees.

Reacquaint yourself with the UNLV College of Fine Arts and Performing Arts Center in 2009-2010. Review the Performing Arts Center's season offerings in this brochure and consider a subscription. If your budget allows, please also consider a donation to our annual campaign. More information about the Performing Arts Center and a complete event listing can be found at [pac.unlv.edu](http://pac.unlv.edu). For information on the College of Fine Arts, please visit [finearts.unlv.edu](http://finearts.unlv.edu).

Sincerely,

Larry Henley and Lori James  
Co-Directors, UNLV Performing Arts Center

Jeffrey J. Koep, Ph.D.  
Dean, College of Fine Arts

# Charles Vanda Master Series

Concerts held in the Artemus W. Ham Concert Hall



**Virsky Ukrainian National  
Dance Company**  
Saturday, September 26, 2009 • 8 p.m.  
\$40 - \$55 - \$85

Since 1955, the renowned Virsky Ukrainian National Dance Company has toured the exquisite charm of Ukrainian folk dance to international audiences. The dances are spectacular and truly define the beauty and spirit of the Ukraine.



**The Band of the Irish Guards with the Pipes, Drums and  
Dancers of the Royal Regiment of Scotland**  
Sunday, February 28, 2010 • 4 p.m.  
\$35 - \$50 - \$80

Formed over 100 years ago, the Band of the Irish Guards tours worldwide and has been recorded extensively. In constant demand, the Band's main duty is to play for the Mounting of The Queen's Guard at Buckingham Palace and for State ceremonial occasions.



**Midori**  
Friday, October 23, 2009 • 8 p.m.  
\$40 - \$55 - \$85

Since her astonishing debut at age 11, Midori has staked her claim as one of the world's leading violinists. She "makes artful use of her gifts, channeling the spirit of composers" (*Los Angeles Times*).



**The Moscow State Radio  
Symphony Orchestra**  
Alexei Kornienko, Music Director  
Saturday, March 13, 2010 • 8 p.m.  
\$40 - \$55 - \$85

"An evening of wonderfully played music," raves the *Palm Beach Daily News*. The Moscow State Radio Symphony Orchestra's program includes Rimsky-Korsakov's *May Night: Overture* and Stravinsky's *Petrouchka* for Orchestra and *The Firebird Suite*.



**Moscow Festival Ballet  
performing Coppélia**  
Thursday, February 4, 2010 • 8 p.m.  
\$35 - \$50 - \$80

Legendary Bolshoi principal Sergei Radchenko founded this company of dancers from the great Bolshoi and Kirov Ballets. They perform *Coppélia*, a classic comic ballet about a life-size dancing doll invented by the mysterious Dr. Coppélius.



**Vienna Boys Choir**  
Thursday, March 18, 2010 • 8 p.m.  
\$35 - \$50 - \$80

Come and be enchanted by these young favorites who have performed for millions over more than five centuries with their unique charm and especially beautiful voices. More than 100 choristers make up four choirs which tour yearly worldwide.

pure. powerful. arts.

Order Online:

pac.unlv.edu

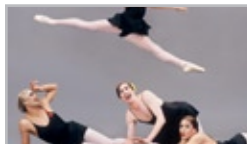
# New York Stage & Beyond

Concerts held in the Artemus W. Ham Concert Hall



**Cleo Parker Robinson  
Dance Company**  
Friday, October 9, 2009 • 8 p.m.  
\$40 - \$55 - \$85

Called "world-class" by *The New York Times*, the Cleo Parker Robinson Dance Company is guided by a vision of dance as the universal language of movement that celebrates performance, individual expression, healing and peace.



**Les Ballets Trockadero  
de Monte Carlo**  
Saturday, February 6, 2010 • 8 p.m.  
\$40 - \$55 - \$85

The world's foremost all-male comic ballet company returns to Las Vegas! Combining a loving knowledge of dance with a wicked madcap sensibility, the Trocks offer a buoyant and hilarious evening for young and old.



**A Forbidden Broadway Christmas**  
Catherine Stornetta, Conductor  
with the UNLV Jazz Symphony  
Saturday, December 5, 2009 • 8 p.m.  
\$40 - \$55 - \$85

From the mischievous merry-makers who brought you *Forbidden Broadway*, this holiday musical extravaganza is guaranteed to fill your holiday with hilarity. Selections include "Barbra Jingle Bells" and "Fiddler on an Xmas Tree."



**An Evening with Bernadette Peters**  
Saturday, May 1, 2010 • 8 p.m.  
\$45 - \$60 - \$90

Join the UNLV Performing Arts Center for a classic evening of Broadway and cabaret with Broadway's biggest star. A 7-time Tony nominee, Bernadette Peters simply dazzles audiences and critics alike.



**The Best of Rodgers and Hammerstein: Broadway in Concert**  
Saturday, January 30, 2010 • 8 p.m.  
\$40 - \$55 - \$85

Join three of Broadway's brightest stars for an enchanted evening of the glorious music of Rodgers and Hammerstein, including songs from *South Pacific*, *The King and I*, *Carousel*, *The Sound of Music*, *Oklahoma*, and much more.

# UNLV Classical Guitar Series

Concerts held in the Doc Rando Recital Hall of the Lee & Thomas Beam Music Center



**Slava & Leonard Grigoryan**  
Wednesday, October 14, 2009 • 8 p.m.  
\$35

Australians Slava and Leonard Grigoryan are each accomplished guitarists. As a duo, the Grigoryan Brothers have toured around the world and released three recordings. They belong in a special category of excellence.



**Adam del Monte**  
Thursday, March 25, 2010 • 8 p.m.  
\$35

First Prize winner at the 1997 Stotsenberg International Classical Guitar Competition, del Monte is one of the leading guitarists in the world today; he transcends label and convention, performing both flamenco and classical guitar.



**William Kanengiser**  
Wednesday, November 18, 2009 • 8 p.m.  
\$35

Praised for his "exceeding vitality and warmth" and "dizzying execution," (*Los Angeles Times*) William Kanengiser is recognized as one of America's most brilliant guitarists and has developed a unique repertoire, including dazzling arrangements of Mozart, Handel, and Bartok.



**Ricardo Cobo and  
Christopher McGuire**  
Friday, April 23, 2010 • 8 p.m.  
\$35

Ricardo Cobo made his professional debut at age 17. One of the leading virtuosos of his generation, Cobo teams with American guitarist Christopher McGuire, who commands the many expressive qualities of the guitar.



pure. powerful. arts.

Order Online:

pac.unlv.edu

## WE INVITE YOU TO CONSIDER ADDING A DONATION TO YOUR SUBSCRIPTION.

*Thank you for taking the time to consider adding a donation to the UNLV Performing Arts Center to the cost of your subscription. When you donate to the UNLV Performing Arts Center annually, you join the ranks of the Arts Supporters, those people who believe in the powerful experiences great performing arts can provide.*

### WHY SHOULD I DONATE?

Many people may not know that the UNLV Performing Arts Center is a self-supporting unit of the University (the University provides management staff and pays utilities and some maintenance costs). We rely on donations, as well as revenue from ticket sales and rental fees, to help us operate our performance facilities and present performances and exhibits by university, community, national and international artists, performers, and lecturers.

### DOESN'T THE MONEY YOU RECEIVE FROM TICKET SALES COVER YOUR EXPENSES?

Funds received from ticket sales cover some of the artists' fees. However, there are many other expenses not covered by those funds that we pay to help make your evening at the Performing Arts Center outstanding. For instance, we rent state-of-the-art sound equipment for many of our New York Stage and Beyond performances, and we often need to replace technological equipment in our venues.

### AS PART OF UNLV, DO YOU HELP EDUCATE FUTURE PERFORMERS AND AUDIENCE MEMBERS?

Yes, here's how:

- The UNLV Performing Arts Center has three performance spaces, and they are home to the UNLV Music Department and its various ensembles, the UNLV Department of Theatre and its Nevada Conservatory Theatre, and the UNLV Department of Dance. Your donation helps us provide top-notch facilities for these young artists.
- As we are planning the coming season of great artists we bring to Las Vegas, we often invite the artists to present master classes to UNLV College of Fine Arts and Clark County School District students. In past years, master classes have been offered by the likes of Itzhak Perlman, Jerry Herman, and the Aspen Santa Fe Ballet.
- Often, many of the performers we bring to Las Vegas require musical accompaniment. In these cases, we are often able to invite students from the UNLV music department to perform with our guest artists. Students rehearse with the artist and perform in the show, providing them valuable professional experience.
- Through the generosity of an initial grant from the Alfred and Marjorie Rappaport Foundation, the UNLV Performing Arts Center provides free tickets to students from the Clark County School District. We also offer reduced-price tickets to all UNLV, CSUN, and CCSD students, helping Las Vegas build an audience for the arts.

## YOU'RE READY TO DONATE? THANK YOU!

**Please take a look at our giving circles and donate at the level with which you're most comfortable.**

### AGENTS CIRCLE (\$1 - \$99)

- Recognition by the UNLV Foundation as a Friend of the University
- Recognition as a member of the College of Fine Arts Donor Honor Roll
- College of Fine Arts Newsletter

### ARTISTS CIRCLE (\$100 - \$299)

- All Agents Circle Benefits, plus ...
- Acknowledgment in Performing Arts Center event programs
- UNLV Magazine

### PRINCIPALS CIRCLE (\$300 - \$599)

- All of the Artists Circle benefits, plus ...
- 2 Free Drink Coupons
- A Backstage Tour of the Artemus W. Ham Concert Hall

### CONCERTMASTERS CIRCLE (\$600 - \$999)

- All of the Principals Circle benefits, plus ...
- 2 Additional Free Drink Coupons
- Name Recognition on a Placard in the Artemus W. Ham Concert Hall Lobby

### CONDUCTORS CIRCLE (\$1000 - \$2499)

- All of the Concertmasters Circle benefits, plus ...
- Post Concert Meet and Greet with Artist (with artist permission)
- 2 Free Tickets to a UNLV Performing Arts Center performance of your choice

### CHOREOGRAPHERS CIRCLE (\$2500 - \$4999)

- All of the Conductors Circle benefits, plus ...
- Dinner with the Performing Arts Center Co-Directors

Note: To make a donation in excess of \$4999, contact Lori James, Director of Finance & Guest Relations at (702) 895-4711 for giving circles at higher levels.

*The Internal Revenue Service considers any benefits and privileges in recognition of charitable gifts as a reduction in the value of a gift. We suggest that you contact your tax advisor for further information about the deductibility of your donation.*

## 2009-2010 Season Order Form

Circle the price/section you prefer, enter quantity, and total.

	A	B	C	# of Tkts	Total
Charles Vanda Master Series	\$420	\$270	\$190	x _____	= \$ _____
New York Stage & Beyond	\$365	\$240	\$175	x _____	= \$ _____
Classical Guitar Series	\$120			x _____	= \$ _____
Master Series + New York Stage & Beyond	\$740	\$475	\$345	x _____	= \$ _____
Master Series + Classical Guitar Series	\$510	\$365	\$295	x _____	= \$ _____
All Three Series	\$800	\$550	\$430	x _____	= \$ _____

Subtotal \$ \_\_\_\_\_

Your contribution helps! Find out how and review the benefits of contributing in this brochure.

Contribution = \$ \_\_\_\_\_

Total Enclosed = \$ \_\_\_\_\_

**Circle payment method**

Check (Payable to Board of Regents)    Visa    M/C    Discover    Am Ex    Diner's Club

Credit Card Number \_\_\_\_\_ Exp. Date \_\_\_\_\_

Signature \_\_\_\_\_

Seating Preference \_\_\_\_\_

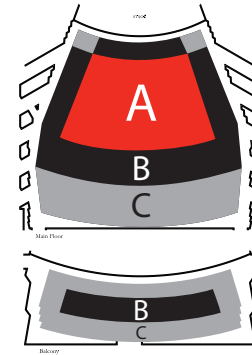
Name \_\_\_\_\_

Address \_\_\_\_\_

City \_\_\_\_\_ State \_\_\_\_\_ Zip \_\_\_\_\_

Day Phone \_\_\_\_\_ Evening Phone \_\_\_\_\_

Email Address \_\_\_\_\_



*To Place Your Order*

Order Online:

**pac.unlv.edu**

Call:

**(702) 895-ARTS(2787)**

Fax Form To:

**(702) 895-1940**

Mail Form To:

**Box 455005  
4505 S. Maryland Parkway  
Las Vegas, NV  
89154-5005**

**Single tickets  
on sale Saturday,  
August 29, 2009.**

**ALL SALES  
ARE FINAL**

Order Online:  
**pac.unlv.edu**



Performing **Arts** Center  
UNIVERSITY OF NEVADA LAS VEGAS

Box 455005 • 4505 S. Maryland Parkway  
Las Vegas, NV 89154-5005

Non-Profit Org.  
U.S. Postage  
**PAID**  
Las Vegas, NV  
Permit No. 200

*p u r e . p o w e r f u l . a r t s .*